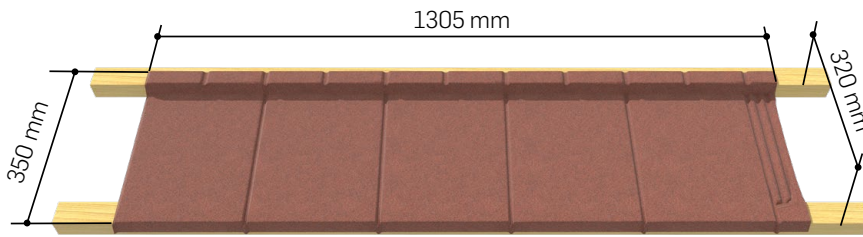


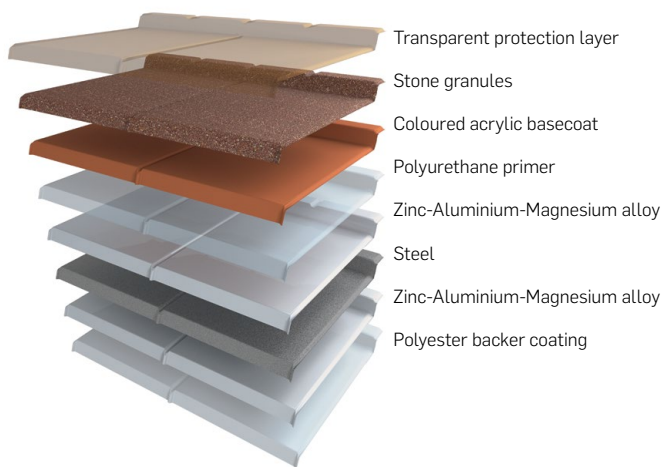
ELEGANTA TILE SPECIFICATION

TECHNICAL DATA



Overall Length	1305 mm
Length of Cover	1260 mm
Overall Width	350 mm
Width of Cover	320 mm
Minimum pitch	15° (27%)
Maximum pitch	90°
Roof Cover	0.405 m ²
Tiles per m ²	2.47
Weight/panel	2.75 kg
Weight/area	6.80 kg/m ²
Batten space	320 mm

MATERIAL STRUCTURE



COATING SPECIFICATION

Transparent protection layer: Clear 100% acrylic resin coating for granule binding and a semi-gloss finish. It helps enhance the appearance as well as increase the resistance to physical damage.

Stone Chip: Carefully selected granules provide excellent surface coverage and attractive natural looking and lasting colours.

Basecoat: A tough opaque coating based on acrylic resin. It bonds the stone chips and protects the underlying layer from water and UV radiation. It has good UV resistance and retains its flexibility although it does become harder after the first few weeks.

Polyurethane primer: The primer is applied by a coil coating process, this coating provides increased corrosion protection and a surface for superior adhesion of the basecoat that is applied.

Polyester Backer Coating: This coating provides increased durability to the underside of the tiles.

STEEL SPECIFICATION

The Gerard Eleganta tile is made of ZM250. ZM250 is a steel that is coated with alloy of 93,5 % Zinc, 3,5 % Aluminium and 3 % Magnesium. The grade of steel used is designed to allow pressing without cracking while at the same time is ridged enough to tolerate reasonable loads.

Nominal Thickness	0.50 mm
Steel Grade	DX53D
Zinc-Aluminium-Magnesium Coating Mass	250 g/m ²
Zinc-Aluminium-Magnesium Coating Grade	ZM250

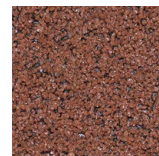
COLOURS



BLACK



BROWN



RED

TEXTURED SURFACE

Stone chip granules are applied to provide an attractive textured finish which at the same time enhance resistance to UV radiation. Granules are coated with lightfast heat resistant pigments.